

Olaf - In Summer m. 6-23

OLAF  
Yeah. Why?

ANNA  
Do you know where she is?

OLAF  
Yeah. Why?

ANNA  
Do you think you could show us the way?

OLAF  
Yeah. Why?

KRISTOFF  
I'll tell you why. We need Elsa to bring back summer.

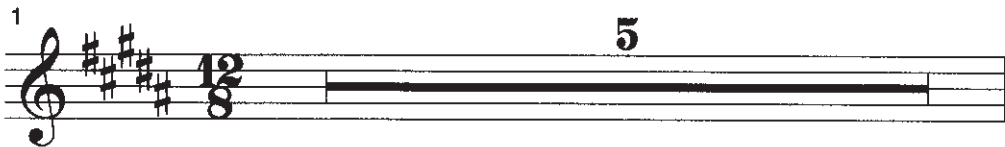
OLAF  
Summer? Oh, I don't know why but I've always loved the idea of summer, and sun, and all things hot.

KRISTOFF  
Really? I'm guessing you don't have much experience with heat.

(#18 – IN SUMMER.)

# In Summer

OLAF: Nope. But sometimes I like to close my eyes and imagine what it'd be like when summer does come!



7

kids - 'll blow dan - de - li - on fuzz, and

8

I'll be do - ing what - ev - er snow does in —

9

— sum - mer.

*(A SUMMER CHORUS enters to help create Olaf's perfect summer fantasy.)*

10

A drink in my hand, my

12


snow up a - gainst the burn - ing sand, —


13


prob - 'ly get - ting gor - geous - ly tanned in —


14


— sum - mer. I'll


15  
  
 fin - 'ly see a sum - mer breeze — blow a -


16  
  
 way a win - ter storm — and

17  
  
 find out what hap-pens to sol - id wa - ter when

18  
*(SVEN joins OLAF in the summer fantasy.)*  
  
 it gets warm. And I

20  
  
 can't wait to see what my

21  
  
 bud-dies all think of me. Just i -

22  
  
 ma - gine how much cool - er I'll be in —

23 **SUMMER CHORUS, SVEN:**  

 — sum - mer! Da

24 **OLAF:**  

 da Da doo Bah bah bah ba ba-ba boo The

26  

 hot and the cold are both so in - tense,

27  

 put 'em to - ge - ther, it just makes sense!

28 **SUMMER CHORUS, SVEN:**  

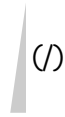
 Rat da dat da da da da da da doo...\_

30 **OLAF:**  

 Win-ter's a good time to stay in and cud - dle, but

31  

 put me in sum - mer and



Thank you for accepting cookies. You can now [hide this message](#) or [find out more about cookies](#).

**Hide**

**More info**

# Audition Central: Disney's Frozen JR.

Script: Olaf

**OLAF**

Okay. Let's start this thing over. Hi everyone, I'm Olaf, and I like warm hugs.

**ANNA**

Olaf?

**OLAF**

Yeah-huh.

**KRISTOFF**

Olaf?

**OLAF**

Like I said, yeah-huh.

*(SVEN begins to sniff OLAF.)*

And who's the funky-looking donkey?

**ANNA**

*(assuming Olaf is referring to SVEN)*

That's Sven.

**OLAF**

Ah-huh. And who's the reindeer?

*(Realizing who the funky-looking donkey is, KRISTOFF crosses his arms, offended.)*

**ANNA**

... Sven.

**OLAF**

Oh good. They're both Sven. Makes it easier for me.

*(to ANNA)*

And you're Anna.

**ANNA**

How do you know my name?

**OLAF**

Because you gave me my big... bouncy...

**ANNA**

Butt?

**OLAF**

That's right. Don't you remember?

**ANNA**

... I think I'm starting to.

Thank you for accepting cookies. You can now [hide this message](#) or [find out more about cookies.](#)

Hide

More info

Music Theatre International  
423 West 55th Street  
Second Floor  
New York, NY 10019  
T: +1 (212) 541-4684 (tel:+1 212 541-4684)  
F: +1 (212) 397-4684

Music Theatre International: Europe  
12-14 Mortimer Street  
London W1T 3JJ  
T: +44 (0)20 7580 2827 (tel:44 + 020 7580 2827)  
F: \*44 (0)20 7436 9616

Music Theatre International (Australasia)  
Ground Floor, Suite 2  
20-22 Albert Road,  
South Melbourne, 3205  
Victoria, Australia  
T: +61 3 9581 2222 (tel:+61 3 9581 2222)

©MTI Enterprises Inc. All Rights Reserved.

[TERMS & CONDITIONS \(/LEGAL\)](#)

[PRIVACY POLICY \(/PRIVACY-POLICY\)](#)

[CONTACT \(/ABOUT/CONTACT-US\)](#)



[SEND FEEDBACK \(/CONTACT?DESTINATION=SCRIPT/18868001/PRINT\)](#)

Thank you for accepting cookies. You can now [hide this message](#) or [find out more about cookies](#).

Hide

More info